

Quadri - Single or three phase direct on-line starter

A controller with adjustable parameters for use in 1 or 2 pump systems

- **Automatic or Manual Operation**
- **LCD Information Display**
- **Adjustable Parameters**
- **High Quality Components**
- **Durable ABS Construction**
- **Pump Balancing, shares the work between two pumps (2 pump model only)**
- **Flexible: For Boosting, Storage and Sewage Pump Control**
- **IP55 Rated**



How Does It Work?

The Mac3 **Quadri** is a direct on-line starter and pump controller for use with single and three phase systems.

The **Quadri** can control up to two pumps depending on model, and is able to balance the workload by alternating the starts of each pump (unless demand requires both pumps be activated simultaneously). The **Quadri** uses float switches / level probes and/or pressure switches to determine if single or both pumps are required.

This **Quadri** functions in automatic or manual configuration.

Automatic configuration allows the **Quadri** to test the connected hardware, determine the correct input / output levels, and then operates within them.

The configuration allows the user to pre-set the following operating parameters:

- Wait filling time
- Motor start delay duration
- Maximum motor current (over-current protection)
- Minimum and maximum operating voltage

Operational parameters can be viewed on the LED's and edited on the potentiometers on the circuit board. This allows the **Quadri** to display system information such as:

- The operational status of the motor
- Error messages
- Defined parameters of operation

The **Quadri** can run in three modes:

- Boosting
- Storage
- Sewage

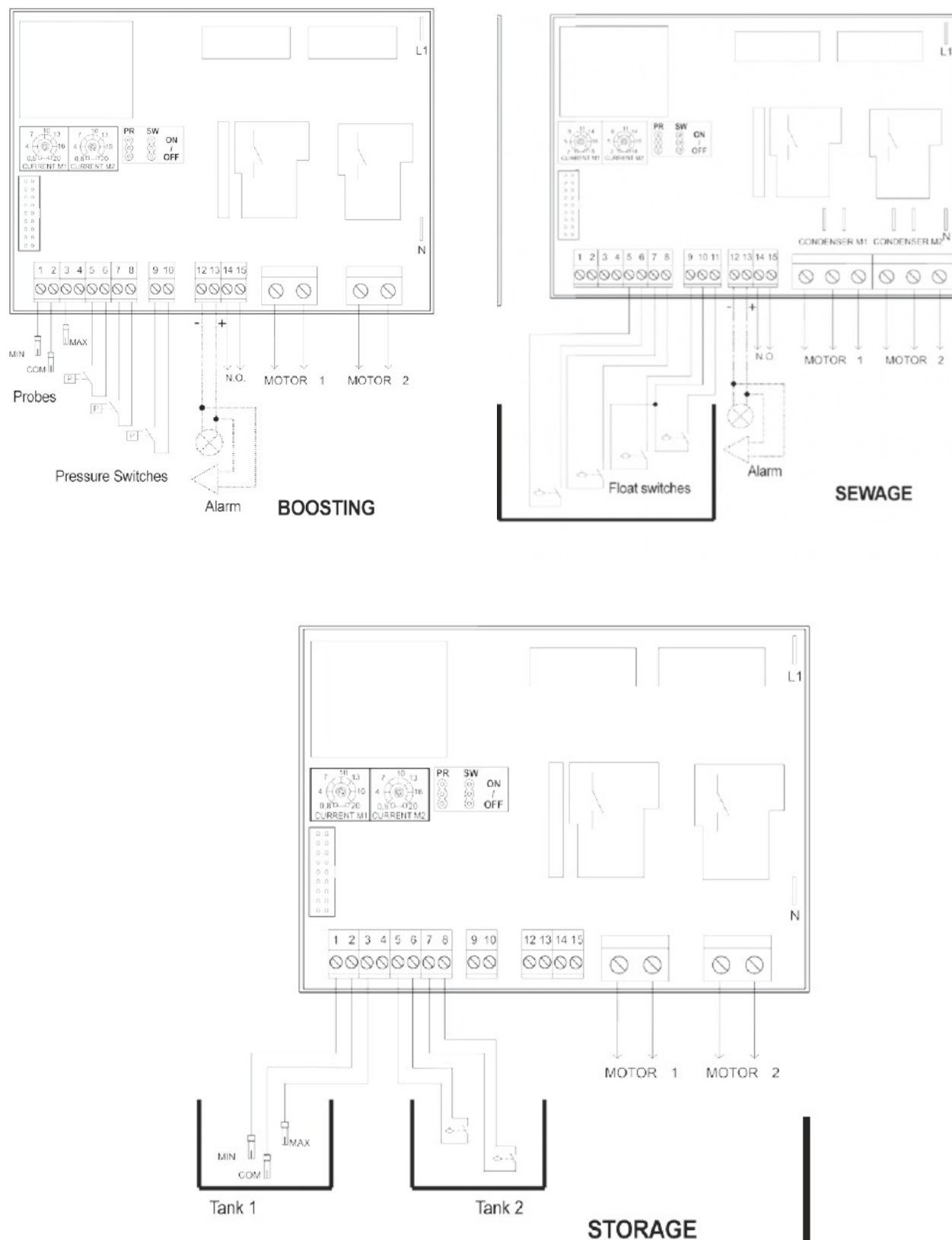
Boosting allows the **Quadri** to function with a pressure boosting system, using both probes and pressure switches to monitor and run pumps when a pressure or level drop is detected.

Storage allows the **Quadri** to monitor the levels in two tanks, and function as a level controller.

Sewage allows the **Quadri** to use float switches to determine levels inside a tank and pump according to the parameters set by the installer.

Quadri - Single or three phase direct on-line starter

A controller with adjustable parameters for use in 1 or 2 pump systems



Quadri - Single or three phase direct on-line starter

A controller with adjustable parameters for use in 1 or 2 pump systems

Technical Specifications

Physical		
	Single Phase	Three Phase
Width	285 mm	
Length	345 mm	
Height	165 mm	
Weight	2.5 Kg	4 Kg
Material - Body	ABS	
Electrical		
Power Supply	230Vac (±10%) 50 - 60Hz Single Phase	380Vac (±10%) 50 - 60Hz Three Phase
Current Range	2 – 18 A	0.8 – 14 A
Pump Protection	Ammetric (Adjustable For Each Pump Connected)	
Power Of Pump		
Single Pump Model	0.37kW – 2.24kW (0.5 hp – 3 hp)	0.37kW – 3.72kW (0.5 hp – 5 hp)
Twin Pump Model	0.37kW– 2.24kW (0.5 hp – 3 hp)	0.37kW – 6.5kW (0.5 hp – 9 hp)
Errors Display	LED's	
Keypad	Membrane	
Fault detection	Yes	
Inputs	Level Regulator / Float Switch, Pressure switch	
Outputs	Alarm Output Relay	
Environmental		
Ingress Protection Rating	IP55	
Storage Temperature	-20 – 80°C	
Operating Temperature	-5 – 40°C	

3P Technik UK Limited
Unit 9 Parc Teifi
Cardigan
SA43 1EW

Phone : 01239 623506
Fax : 0845 544 3150

sales@3ptechnik.co.uk

www.3ptechnik.co.uk
www.mac3uk.com

