

RainBowl Flower

150 Litres

Art. No. 9000880K
 Art. No. 9000884K
 Art. No. 9000886K
 Art. No. 9000890K

RainBowl Flower

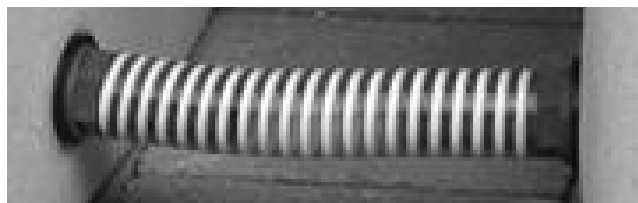
150 Litres

Art. No. 9000880K
 Art. No. 9000884K
 Art. No. 9000886K
 Art. No. 9000890K



5. Tank-to-tank Connection

It is possible to connect two tanks together using the 3/4" BSP threads near the base of the water butt.

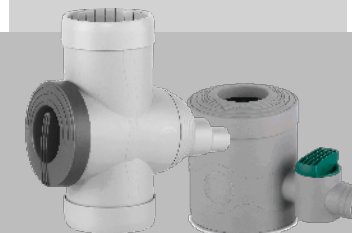


Instructions

To fill the RainBowl Flower, we recommend using the 3P Filter Collector with rubber grommets for the 32mm connection hose.

Where the water butt cannot be located within 30 cm of the downpipe, longer Long Link Kits are available from your dealer.

The RainBowl Flower is delivered with accessory kit including a chrome or brass tap, hole-saw, wall bracket, and screws. If in any doubt during installation, please consult a professional tradesman, or the supplier of your filter or diverter.



1. Setting Up

Site the RainBowl Flower on a firm, level surface, adjacent to the downpipe.

To allow for deflection, fill the tank with water before attaching the wall bracket.

Refer to your Filter Collector or diverter supplier's instructions. This is a sealed tank so you cannot use a backnut to make a connection.

2. Fitting a 3P Filter Collector with Link Kit, or Other Diverters & Connectors

For the correct hole size, refer to your diverter's instructions. You may be able to use the 3P hole saw. Check before using. The connector parts supplied with the RainBowl Flower are intended for use with a 3P Filter Collector.

Marking Out

Measure up 85cm from the base of the butt. This position is ideal for 58mm hole for a 32mm hose connection, using both of the grommets supplied

Hole Cutter Selection

To fill the water butt with the 3P Filter Collector, select the 45mm hole saw from the set provided. Push fit the 50mm AND 32mm grommet into that hole and then push the 32mm hose into the grommet to make a water tight seal. It will need lubrication to ease the hose through the grommet.

Drilling

Offer the drill to the marked point and proceed to drill the hole. If you are fitting a brand of diverter other than 3P, check first that you are drilling the correct hole size for the diverter you are using.

IF IN DOUBT CONSULT YOUR SUPPLIER OR A PROFESSIONAL



3. Connecting the Tap

Screw the 3/4" metal tap provided into the 3/4" BSP connection thread.

If necessary, use PTFE tape when installing the tap to enhance the watertight seal and to ensure the tap sits in the correct position.

4. Winter Care Precautions

To minimise the risk of any damage being caused, the RainBowl Flower must be drained completely and disconnected from the rainwater inlet during freezing weather conditions.

